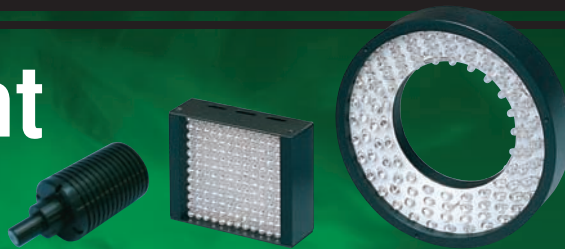


Infrared Light

IR

DC 24V products available



For transmission inspection of a package, and for security use

This is a LED light with a peak wavelength in the near-infrared region. In addition to the standard type with a wavelength of 850nm, wide variations of 780nm, 810nm, 890nm, and 940nm are available. The LED elements are $\phi 3$ mold LED elements whose mold size is the same as that of visible light, and almost all the standard types, such as ring, bar, dome, and plane luminescence light type can be manufactured, with the same number of elements as for the visible light. Also, multiple wavelengths can be integrated in a single lighting unit. Model IHVA has a peak wavelength of 850nm or 940nm. It is extensively used in security applications and non-contact spectrochemical analysis/measurement of sugar content in the food industry, while it is used as measures against ambient illuminance (using a visible light cut filter for camera lens), and for transmission inspection for a work.

Unit: mm

Model (12V)	Number of LEDs	Power Consumption (W)	Outline drawing	Model (24V)
IDR-50/28IR-850	54	2.2	1	IDR-50IRHV-850
IDR-90/50IR-850	108	4.4	2	IDR-90IRHV-850
IDBA-C50/15IR-850	36	1.5	3	IDBA-C5015IRHV-850
IDBA-C72/24IR-850	70	2.4	4	IDBA-C7224IRHV-850
IDBA-C132/15IR-850	96	3.9	5	IDBA-C13215IRHV-850
IHVA-27IR-850A	1	*	6	-
IDHM-32/32IR-850T	24	1.0	7	IDHM-3232IRHV-850
IDHM-62/62IR-850T	96	3.9	8	IDHM-6262IRHV-850
IDHM-122/122IR-850T	384	15.4	9	IDHM-122122IRHV-850

In addition to the above, the same models as the visible light version are available.

Number of LEDs, power consumption, SAG value, and outline drawing are for DC12V products. Please contact us for specifications of DC24V products. RBOX3W-15R is required when using IHVA-271R in combination with a power supply (IDP, IDGA, etc.) other than the IDC power supply.

* 1.2W when using the IDC power supply, 9.0W when using a resistance box

IHVA-27IR Option

Resistance Box / RBOX

Model name	Outline drawing
RBOX3W-15R	

1

2

3

4

5

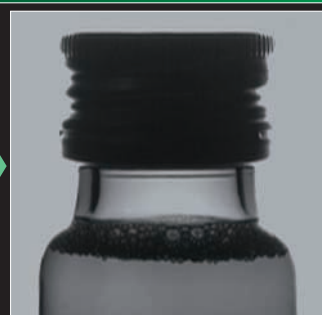
6

7

8

9

Example of the Image Photographed



Transmission inspection is difficult for a brown vial using visible light.

Work: Brown vial of medicinal drink
Light: IDHM-62/62DWS

It is possible to recognize the state of the liquid due to IR transmission through a brown vial.

Work: Brown vial of medicinal drink
Light: IDHM-62/62IR-850T

Characters and dents are recognized simultaneously using visible light.

Work: Dent on the bottom of a can
Light: IDBA-C50/50DWS

It is possible to focus on the dent for inspection, using the long wavelength properties.

Work: Dent inspection on the bottom of a can
Light: IDBA-C50/50IR-850