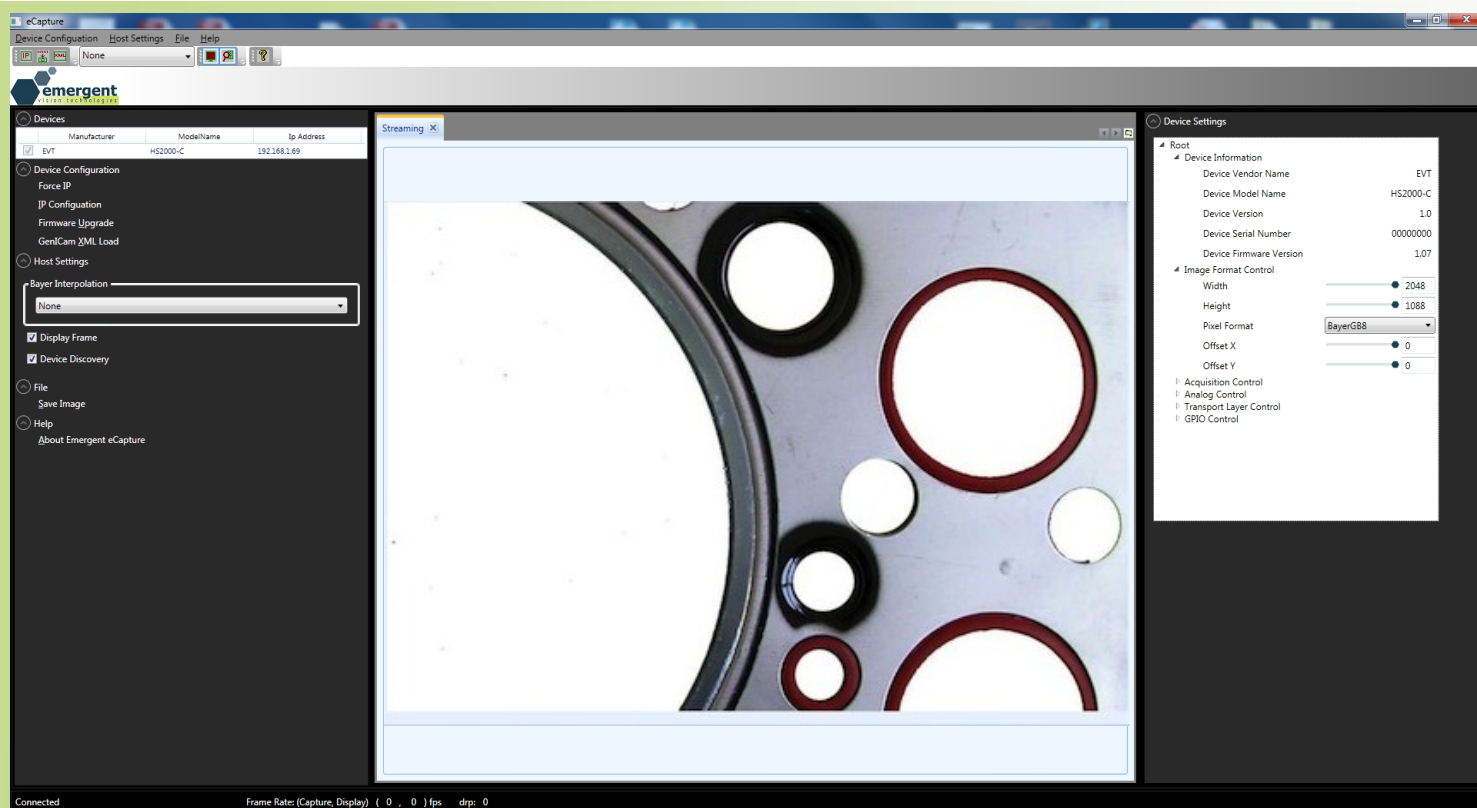


PRODUCT SPECIFICATION SHEET

eCAPTURE

VERSATILE IMAGING FOR ULTRA HIGH SPEED CAMERAS



eCAPTURE—DISCOVER HIGH SPEED IMAGING

eCapture is a user-friendly image capture program that provides complete control over **Emergent Vision Technologies** Camera products. **eCapture** provides easy control of standard camera and image functions such as AOI (area of interest) selections, gain, offset, auto-gain, contrast enhancement, frame rate control and many more features.

Feature packed with additional advanced control of camera functions provides the ability for configuring onboard algorithms, Look Up Tables (LUT), firmware upgrades, GPIO and image recording/streaming control. **eCapture** is GenICam compliant and designed to meet the needs for machine vision users.

eCapture may be requested via **Emergent Vision Technologies** and is included free of charge with the purchase of an Emergent camera system. Regular updates are available from Emergent support at info@emergentvisiontec.com.

FEATURES

- Real Time Preview and Capture
- Full control of EVT Cameras
- IP Configuration Settings
- Remote Firmware Upgrades
- GenICam Camera Feature Controls
- Custom GenICam XML Load
- Recording
- Drawing Tools
- LUT Utility
- File Saving
- <3% CPU Overhead (9Gbps video*)
- * No Display

SYSTEM REQUIREMENTS

Operating System

- Windows 7,8 (64 bit)
- Linux (64 bit)